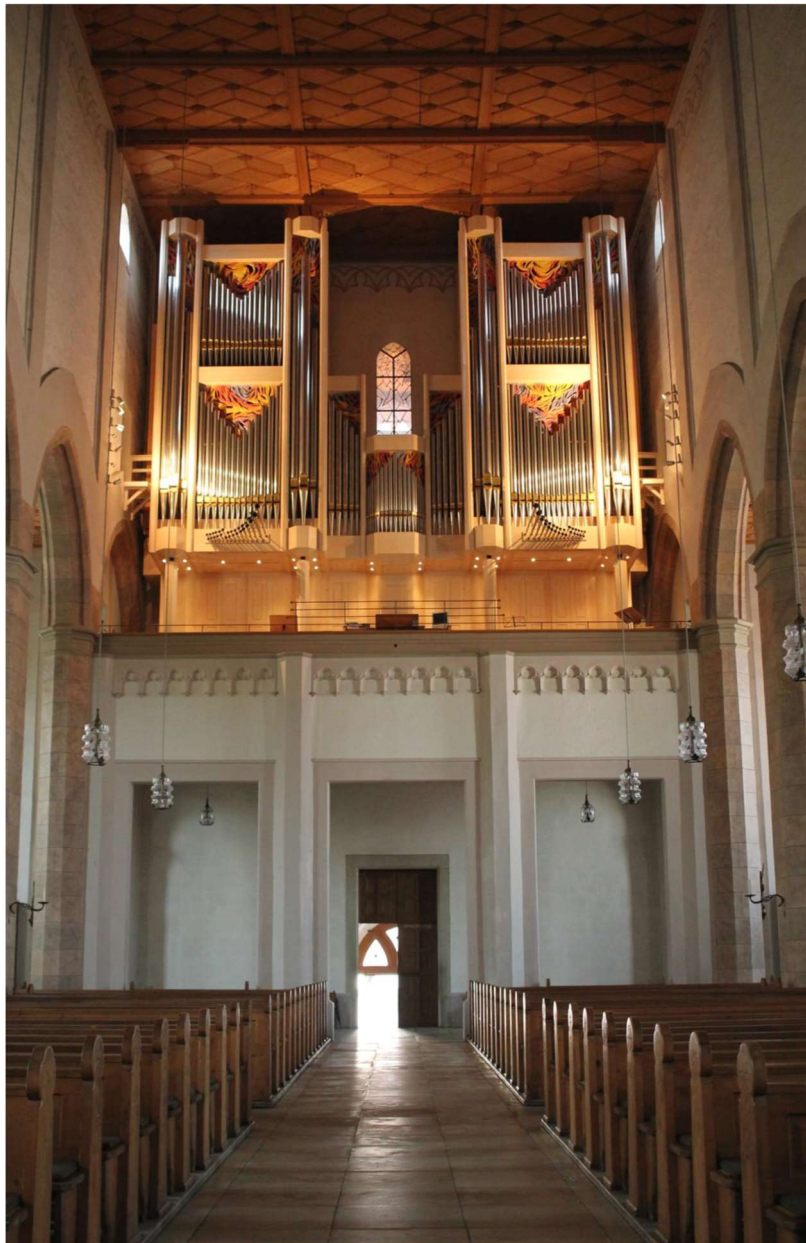


Hauptwerk Sample Set
St. Peter und Paul Waldkirchen
(Bavaria, Germany)
built in 2007 by Orgelbau Eisenbarth
(Passau, Bavaria, Germany)



Contents

Preface.....	3
History of the Organ	3
Specification of the Organ	4
Installation	5
Deinstallation.....	5
Screens	6
Compass	9
Technical Details and Requirements.....	9
Credits.....	10
Contact.....	10

Preface

I proudly present the new version of the sample set of the organ in Waldkirchen (Bavaria, Germany), built in 2007 by Orgelbau Eisenbarth from Passau.

Thomas Fürstberger, October 2022

History of the Organ

The first organ in Waldkirchen was mentioned in 1769. Thirteen years later, in 1782, the market, the church, and its organ burned off. That same year, a new organ was built, however, it was generally considered to be of poor quality.

There is little information about the next instrument. It is only known that it consisted of 33 manual and 7 pedal stops plus several accessories, and that it was modified in 1919 by Michael Weise from Plattling. The sound was said to be "powerful and colorful".

In the early 20th century, organ building styles changed, and the existing organ was considered inadequate. A new organ-building contract was signed with Becker and Hiendl in Passau. The new organ consisted of 26 manual and 5 pedal stops. 150 kg of lead for pipes were collected by the inhabitants of Waldkirchen.

Near the end of World War II the city center of Waldkirchen was burned, and church and organ were destroyed again. A few years later the church was once again rebuilt. In 1949 G. F. Steinmeyer & Co. (Oettingen) installed the choir organ, and in 1951 Orgelbau Eisenbarth (Passau) the new main organ. The choir organ could be coupled to the console of the main organ providing a rich and room-filling sound. However, the pneumatic tracker action was unreliable. Therefore, plans for a new organ were made.

The current main organ, again built by Orgelbau Eisenbarth from Passau, was inaugurated in 2007. Many stops were reused and revoiced from the previous instrument. The choir organ from 1949 was also restored. It can be played from the 4th manual of the main console. The swell division of the main organ can also be played from the 2nd manual of the choir organ.

Conceptually, the organ is very versatile, with a slight French romantic flavor. It contains many colorful foundation stops and a full reed chorus in the swell division.

Specification of the Organ

Pedal	I. Hauptwerk	II. Positiv	III. Schwellwerk	IV. Chororgel
Untersatz 32'	Principal 16'	Gemshorn 16' *	Bordun 16' *	Principal 8'
Principalbaß 16'	Principal 8'	Ital. Principal 8'	Hornprincipal 8' *	Gedeckt 8'
Subbaß 16'	Jubalflöte 8'	Diapason 8'	Soloflöte 8'	Dulzflöte 8'
Octavbaß 8' *	Gedeckt 8'	Nachthorngedackt 8' *	Salicional 8' *	Oktave 4'
Gedecktbaß 8'	Gamba 8'	Dulciana 8'	Vox caelestis 8' *	Querflöte 4'
Violbaß 8'	Octave 4'	Octave 4'	Geigenprincipal 4'	Schwiegel 2'
Choraloctave 4' *	Rohrflöte 4' *	Hohlflöte 4'	Traversflöte 4'	Mixtur 1 1/3' 4-fach
Bombarde 32'	Quinte 2 2/3' *	Nazard 2 2/3' *	Piccolo 2'	Tremolo
Posaune 16'	Octave 2'	Blockflöte 2' *	Mixtur 2 2/3' 5-fach *	
Trompete 8' *	Mixtur 2' 5-6-fach	Terz 1 3/5' *	Bombarde 16'	
	Cornet 8'	Mixtur 1 1/3' 4-fach	Tromp. Harmonique 8'	
Subbaß 16' (ChO)	Trompete 8'	Siffelöte 1'	Oboe 8' *	
Zartbaß 16' (ChO)	Chamade 8'	Englischhorn 16' *	Vox Humana 8' *	
Oktavbaß 8' (ChO)		Klarinette 8'	Clairon 4'	
Pommer 4' (ChO)		Tremolo	Tremolo	

Coupler

I-P, II-P, III-P, IV-P, Super III-P, II-I, III-I, IV-I, IV-III, IV-II, III-II, Sub II-I, Super II-I, Sub III-I, Super III-I, Sub III, Super III, Sub II, Super II, Sub III-II, Super III-II

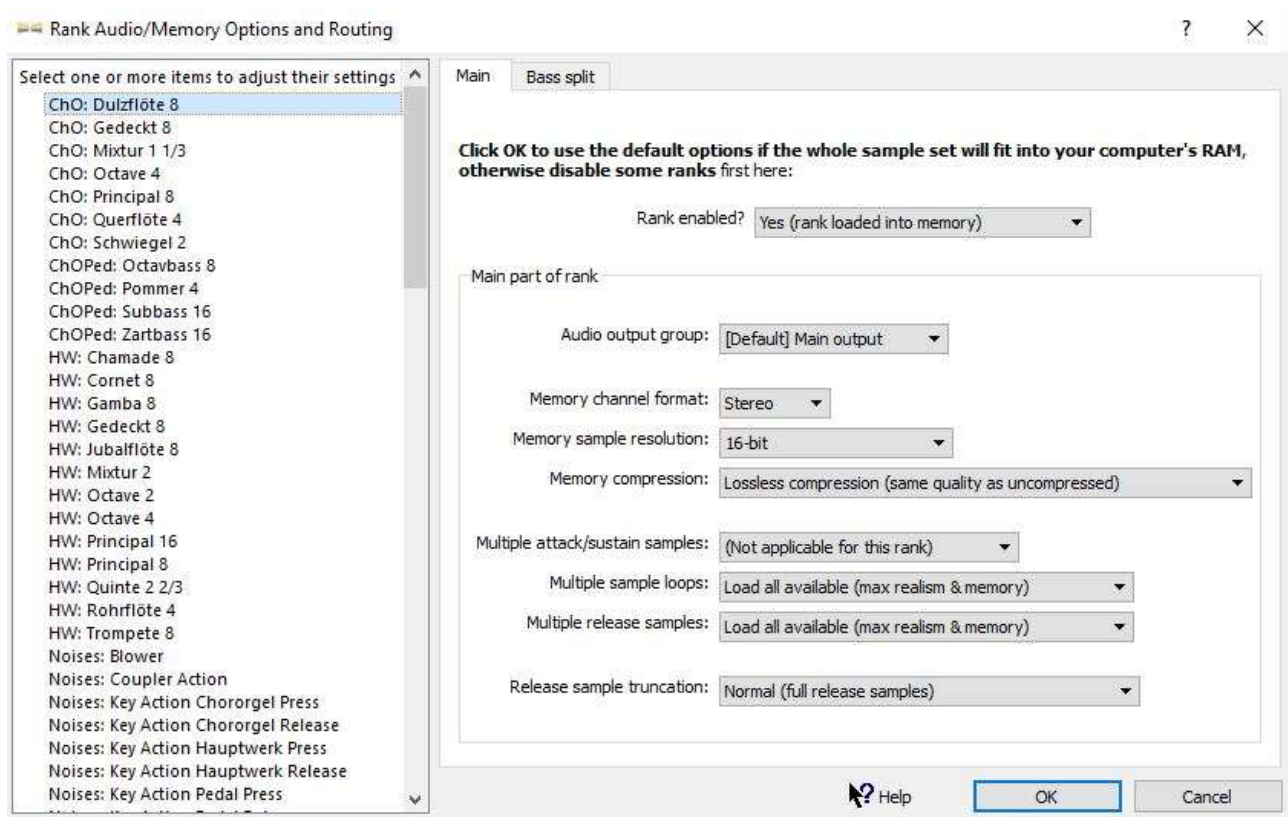
The stops marked with * were taken over from the predecessor instrument, modified and revoiced.

Installation

Please install the organ via the *File – install organ or temperament* menu in Hauptwerk. You only have to choose the first installation file, the other ones are being installed automatically.

When you have done this, please wait a while until all files are installed. Then the following screen appears:

Rank Audio/Memory Options Screen.



There you can select the stops and decide in which bit-quality you want to load them. After that the organ loads for the first time. This can take a while, depending on your computer resources. Finally you can click on *Finish* and make modifications in the large floating control panels.

Deinstallation

The organ can be deinstalled easily using the build-in Hauptwerk deinstallation option:

Hauptwerk > File > Un-Install organ or temperament ...

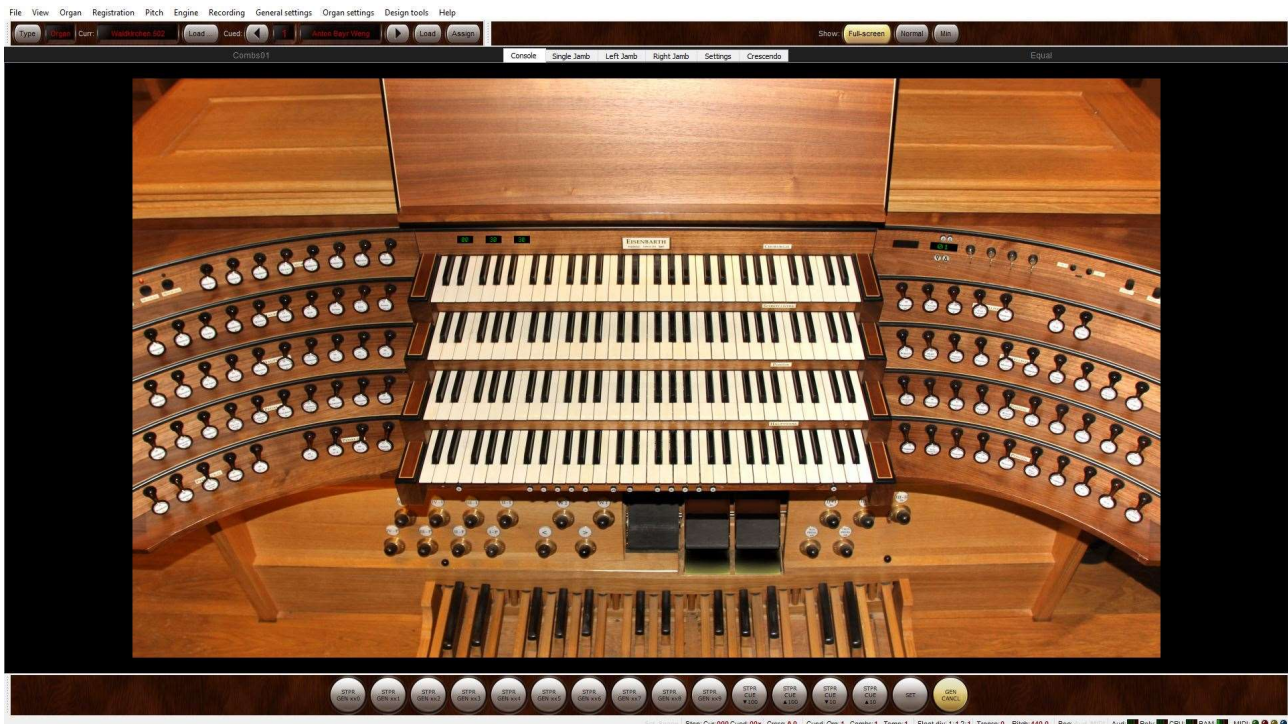
Screens

The sample set provides six screens:

- Console (landscape)
- Single Jamb (landscape)
- Left Jamb (landscape and portrait)
- Right Jamb (landscape and portrait)
- Settings (landscape)
- Crescendo programming (landscape)

All screens support 4k resolution (3940 x 2160 pixel or 2160 x 3940 pixel).

Console

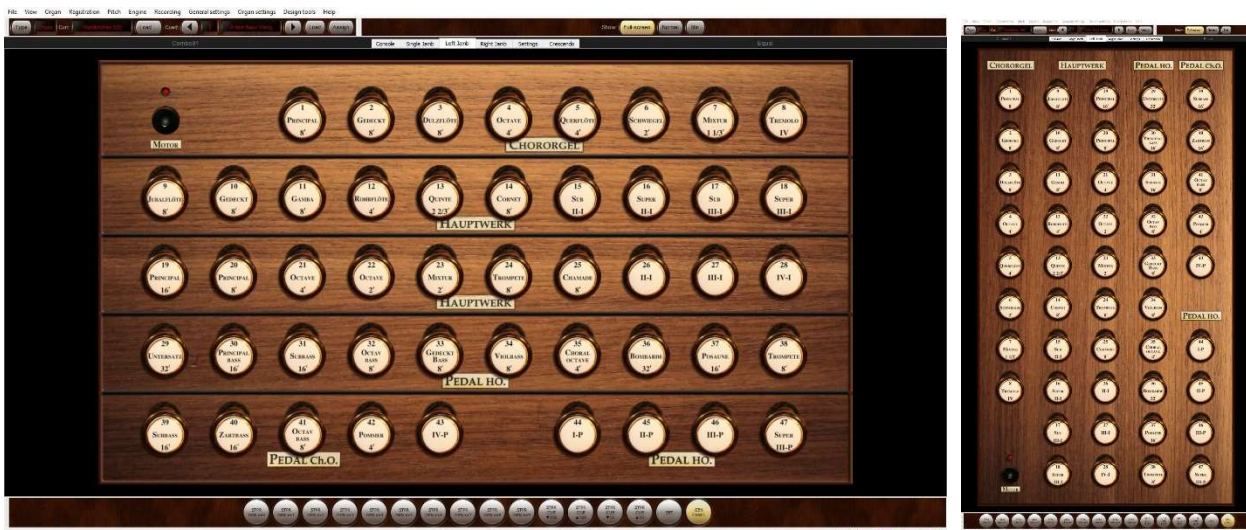


Single Jamb



For consoles with only display there is the Single Jamb screen. Via click on the division labels you can cancel the stops of the complete division. On the top you find a slider for the choir organ volume. So you are free to choose between a normal division and a “Fernwerk”.

Left Jamb



On this screen you find the stops for the left jamb when you have several displays on your console. The screen changes automatically depending on the orientation of your displays.

When you click on the left edge (Portrait: label), you can cancel the whole division.

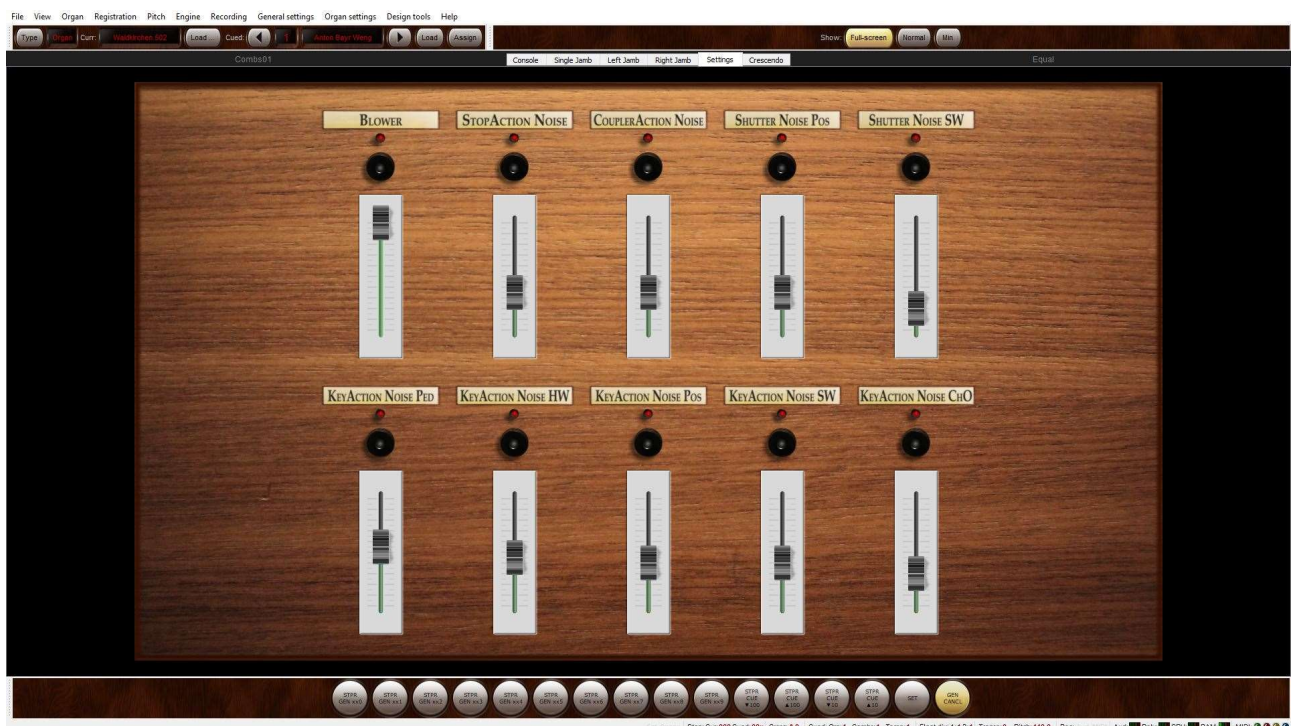
Right Jamb



On this screen you find the stops for the right jamb when you have several displays on your console. The screen changes automatically depending on the orientation of your displays. There is also the slider for the choir organ and the memory switch.

When you click on the right edge (Portrait: label), you can cancel the whole division.

Settings



On this screen you can raise or lower the volumes of the blower, the tracker and the swellbox noises or completely deactivate them.

Crescendo



On this screen you can program the crescendo of the organ by clicking with the mouse. There is an initial crescendo built in, if this doesn't appear after installation, please uninstall the organ and delete all of the settings and combinations. Then please reinstall it.

Compass

The compass of the manuals of the original organ is 58 keys, the compass of the pedal is 30 keys. The ODF offers an extended compass of 61 keys (manuals) and 32 keys (pedal). The highest 3 manual keys and the highest 2 pedal keys are not shown on the console, but are connected correctly using MIDI learn.

Technical Details and Requirements

All samples were recorded in stereo at 24-bit/48 kHz (choir organ 16 bit/48 kHz) for optimal realism with long, medium and short releases. Then they were denoised with a special denoising algorithm to preserve their harmonics. The long samples contain up to 6 loops. The tremmed stops (except Chororgel) were also recorded.

This sample set requires minimum Hauptwerk 5. To load the sample set, your computer must meet the following RAM requirements:

16 bit compressed - 11,4 GB

24 bit compressed - 21 GB

The sample set is encrypted. You have to install the "iLok LicenseManager" on your computer to obtain a license from us. Then you can choose between having a permanent internet connection to keep the license alive or buying an iLok-dongle from a retailer. Onto this you can transfer the license and use Hauptwerk without an internet connection. In Hauptwerk you also have to install the current "LicenseComponentPackage" which you can download from www.hauptwerk.com. It's a rar-file which you install like an organ.

A Hauptwerk4-version is available on request.

Credits

I would like to thank the organ-builder, Eisenbarth from Passau, and Max Pöschl, the organist of this organ, for their ongoing support.

I will also thank Christoph Schmitz, Olivia Nagioff and Stephen Ades for programming, Gregor Dvorzak, Christian Brembeck and Stefan Landes for betatesting and making recordings.

Contact

Forestpipes UG (hb)
Thomas Fürstberger
Linaweg 14
94579 Zenting
Germany
W: www.forestpipes.de
E: info@forestpipes.de
P: +49 9907 872948

The information contained in this manual may be subject to change without notice. No part of this document may be transferred or reproduced, digitally or otherwise, including photocopying without prior consent from Forestpipes.

Copyright © 2022 Forestpipes UG. All rights reserved.

'Hauptwerk', 'Hauptwerk Virtual Pipe Organ', 'Milan Digital Audio' and the Hauptwerk logo are trademarks of Milan Digital Audio LLC.